



COMUNIDADES DIGITALES
PARA EL APRENDIZAJE
EN EDUCACIÓN SUPERIOR

UPPue

Universidad Politécnica de Puebla

TEMA: 1.2

MODELO DE DATOS

DURACIÓN: 10 a 15 minutos
COMUNIDAD: Ingeniería y
Tecnología
NIVEL: Alumnos de educación
superior.

GRADO DE DIFICULTAD:
Básico

B

LICENCIA 2.5 CREATIVE COMMONS (CC BY-ND-2.5 MX)



creative commons méxico



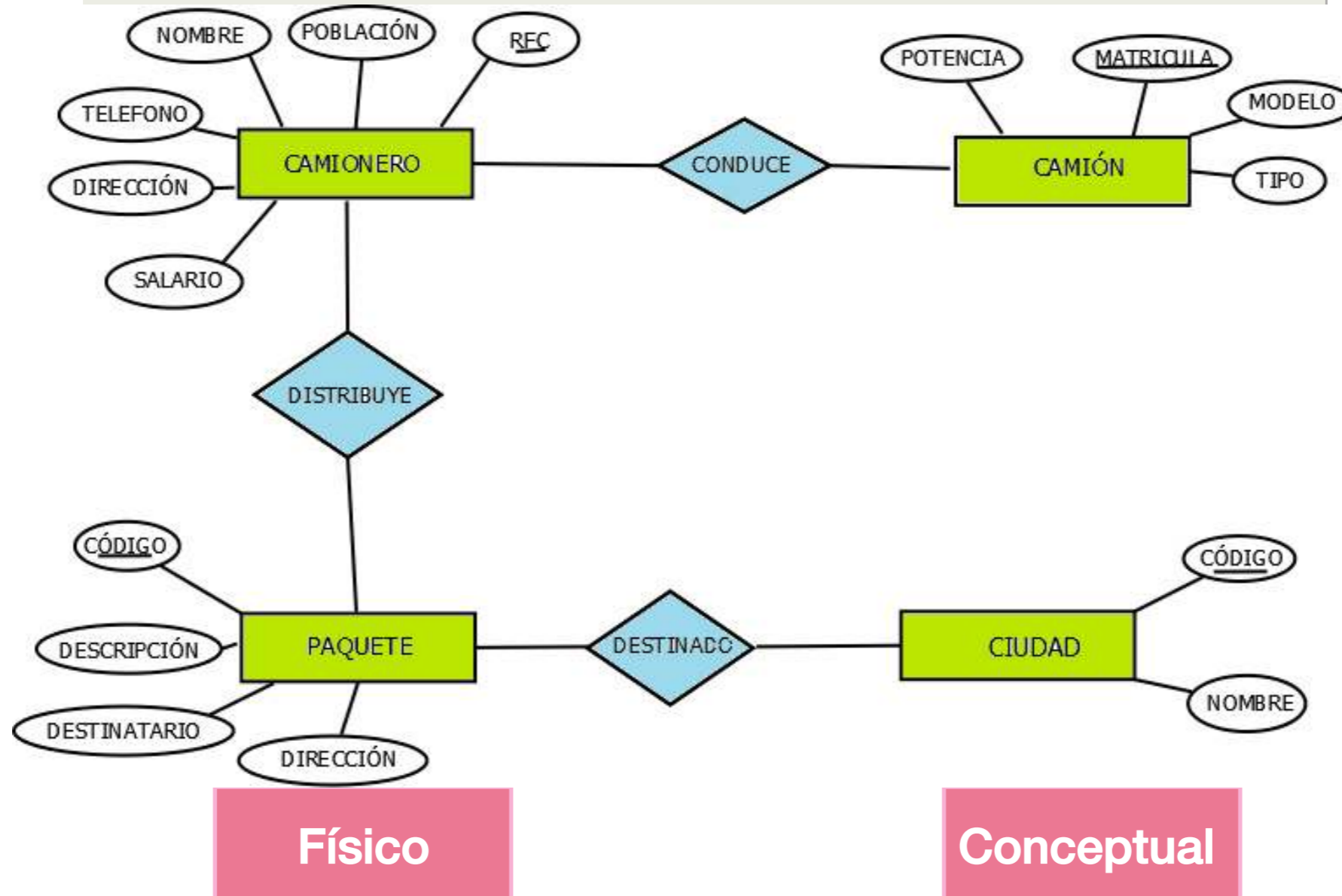
COMUNIDADES DIGITALES
PARA EL APRENDIZAJE
EN EDUCACIÓN SUPERIOR

UPPue

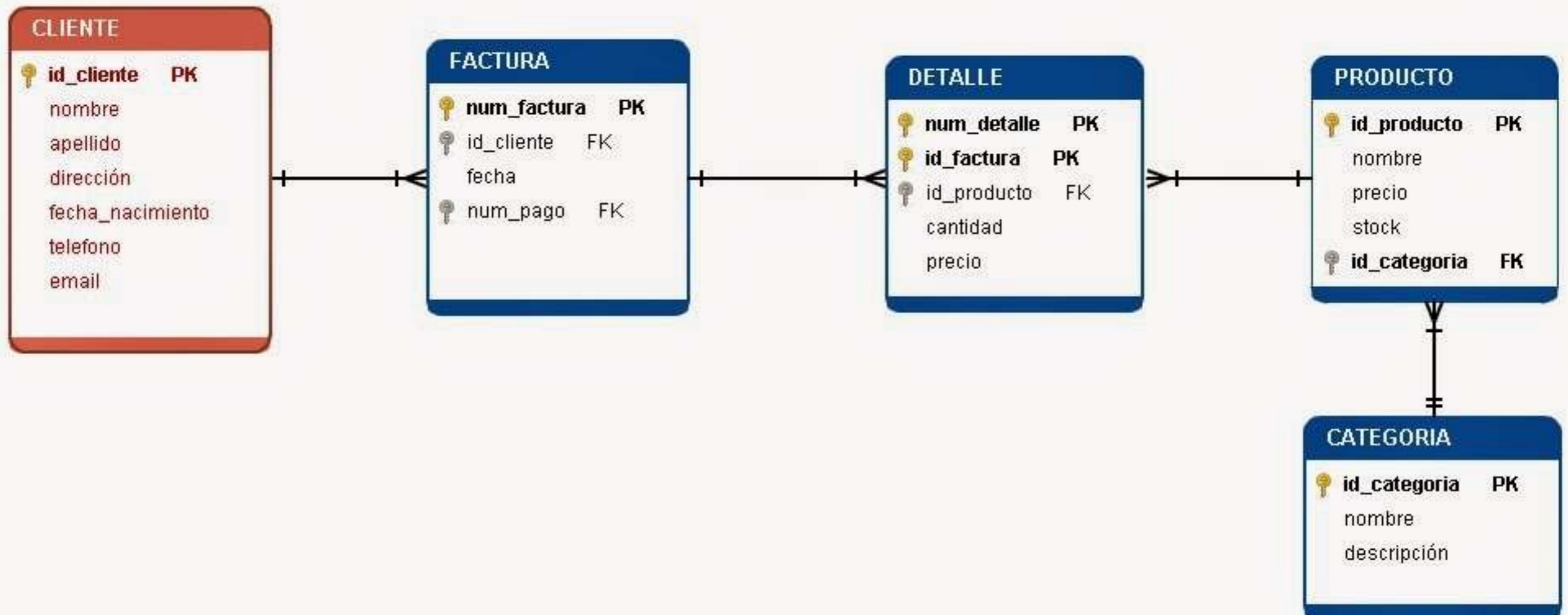
 Universidad Politécnica de Puebla

Observe la imagen que aparecerán en pantalla,
indique cuál de los modelos es el presentado
en las mismas.

¿Qué tipo de modelo es?



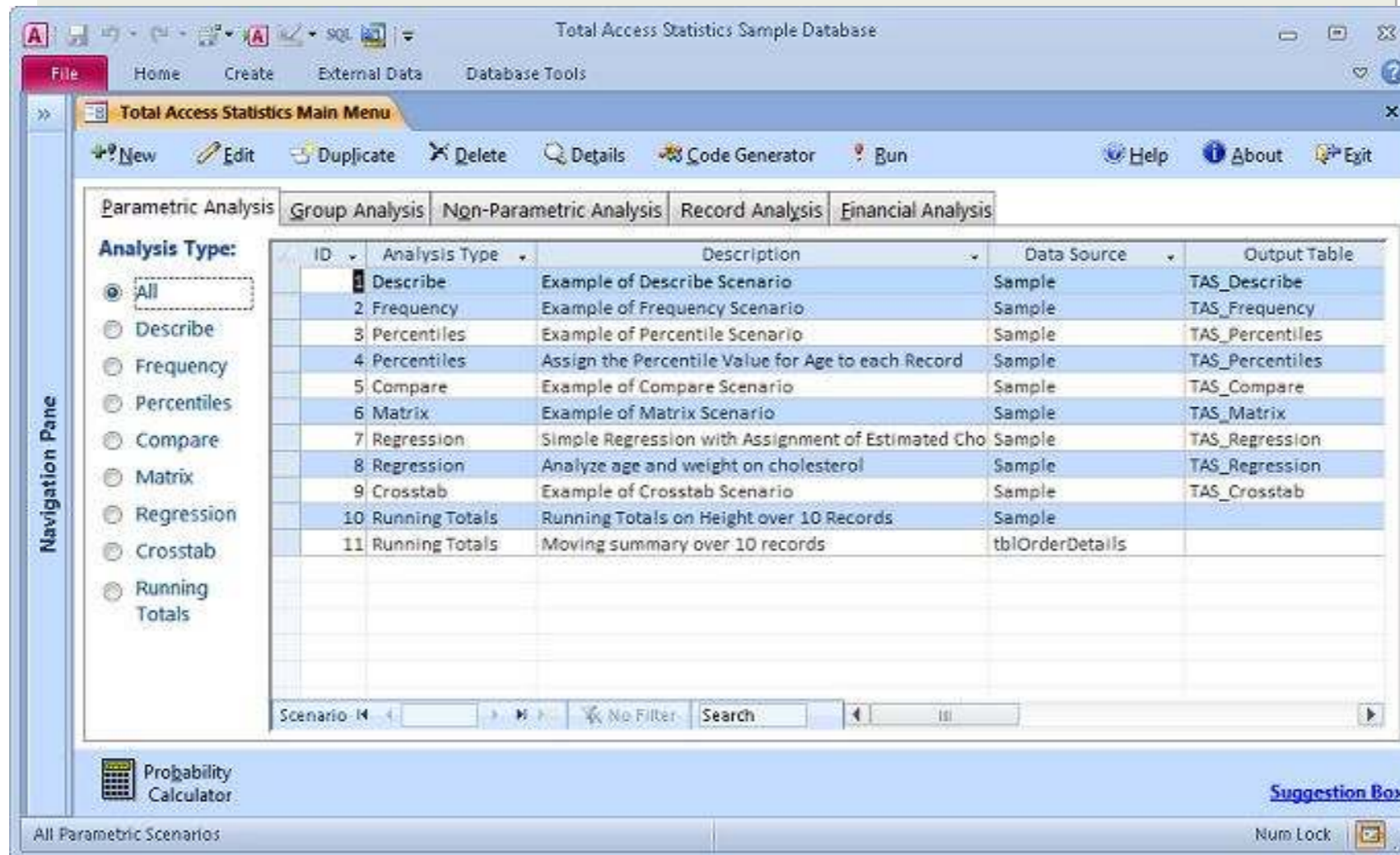
¿Qué tipo de modelo es?



Físico

Conceptual

¿Qué tipo de modelo es?



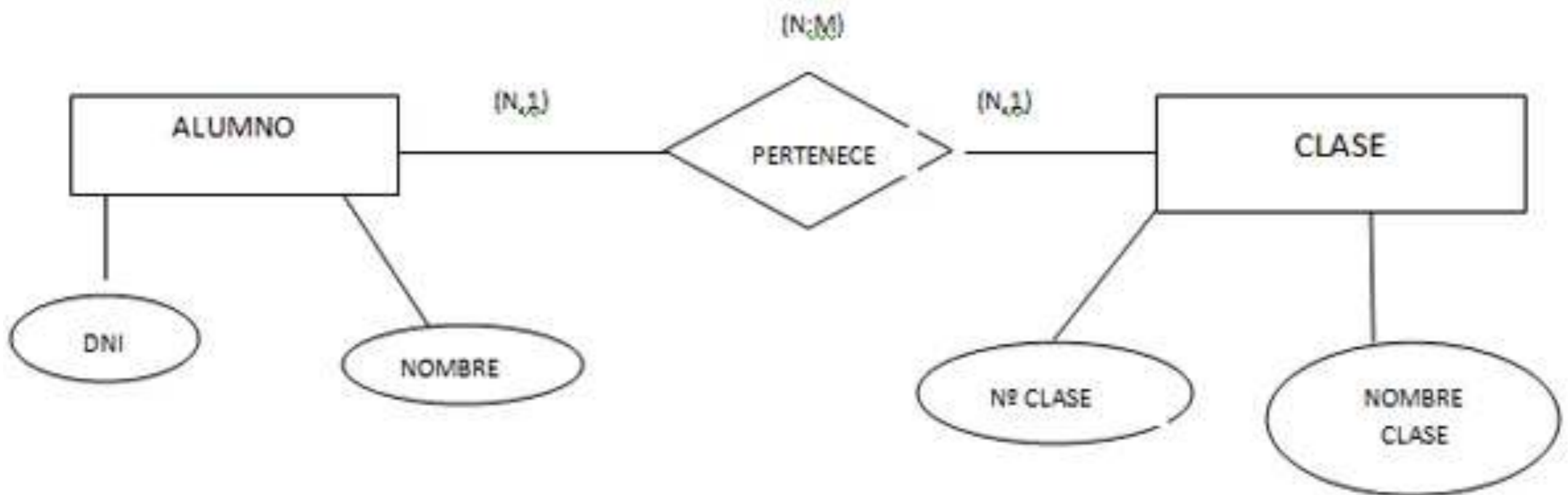
The screenshot shows the 'Total Access Statistics Main Menu' window. It features a 'Navigation Pane' on the left with radio buttons for 'Analysis Type' including All, Describe, Frequency, Percentiles, Compare, Matrix, Regression, Crosstab, and Running Totals. The main area is a table with columns: ID, Analysis Type, Description, Data Source, and Output Table.

ID	Analysis Type	Description	Data Source	Output Table
1	Describe	Example of Describe Scenario	Sample	TAS_Describe
2	Frequency	Example of Frequency Scenario	Sample	TAS_Frequency
3	Percentiles	Example of Percentile Scenario	Sample	TAS_Percentiles
4	Percentiles	Assign the Percentile Value for Age to each Record	Sample	TAS_Percentiles
5	Compare	Example of Compare Scenario	Sample	TAS_Compare
6	Matrix	Example of Matrix Scenario	Sample	TAS_Matrix
7	Regression	Simple Regression with Assignment of Estimated Cho	Sample	TAS_Regression
8	Regression	Analyze age and weight on cholesterol	Sample	TAS_Regression
9	Crosstab	Example of Crosstab Scenario	Sample	TAS_Crosstab
10	Running Totals	Running Totals on Height over 10 Records	Sample	
11	Running Totals	Moving summary over 10 records	tblOrderDetails	

Físico

Conceptual

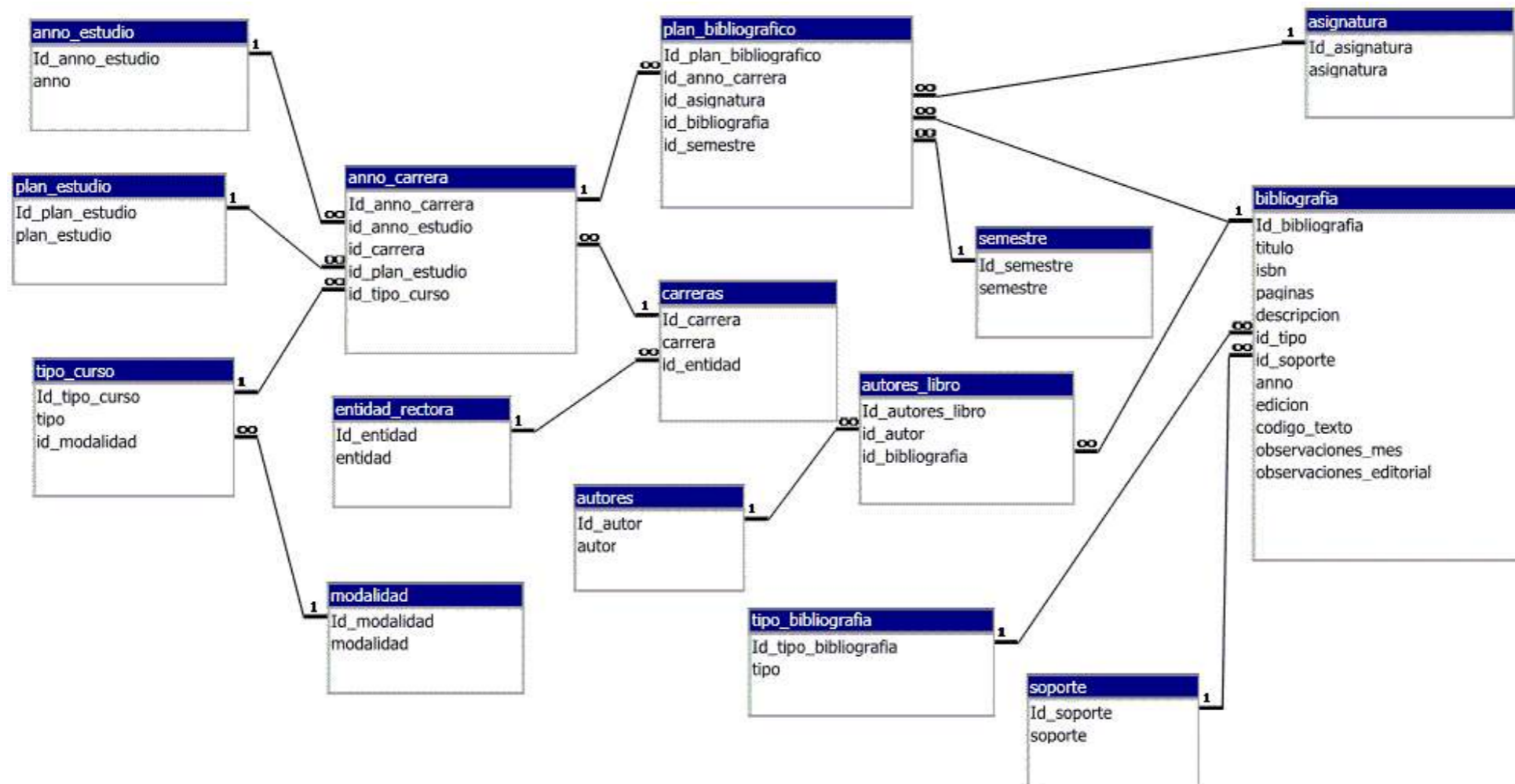
¿Qué tipo de modelo es?



Lógico

Conceptual

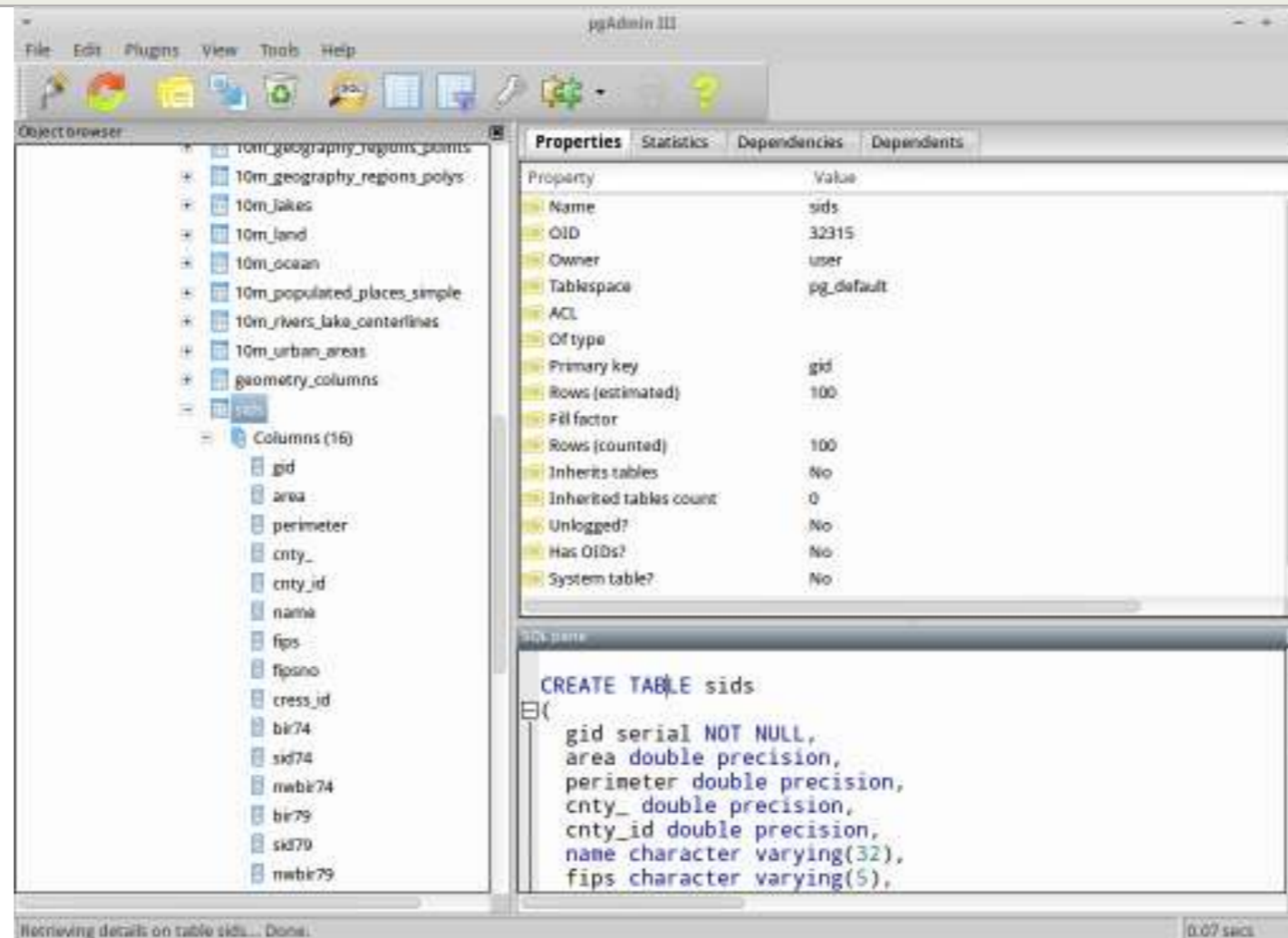
¿Qué tipo de modelo es?



Lógico

Conceptual

¿Qué tipo de modelo es?



The screenshot shows the pgAdmin III interface. On the left, the 'Object browser' displays a tree structure of database objects, including a table named 'sids'. The 'Properties' pane on the right shows the following details for the 'sids' table:

Property	Value
Name	sids
OID	32315
Owner	user
Tablespace	pg_default
ACL	
Of type	
Primary key	gid
Rows (estimated)	100
Fill factor	
Rows (counted)	100
Inherits tables	No
Inherited tables count	0
Unlogged?	No
Has OIDs?	No
System table?	No

The 'SQL pane' at the bottom shows the following CREATE TABLE statement:

```
CREATE TABLE sids
(
  gid serial NOT NULL,
  area double precision,
  perimeter double precision,
  cnty_ double precision,
  cnty_id double precision,
  name character varying(32),
  fips character varying(5),

```

Lógico

Conceptual